

**The EU RECREATIONAL
CRAFT DIRECTIVE
94/25/EC as amended
2003/44/EC**

Nigel Saw

**CEN Consultant Recreational
Craft Directive**



Recent Development in standards in the Recreational Craft Sector

The RCD - Overview

- The RCD is a trade-enabling new approach directive that covers some 32 'Essential Requirements'
- Developed by European Parliament and Member States with industry guidance
- Supported by a mandate of 60 harmonised standards

Scope

- Applies to all leisure craft from 2.5m to 24m in length when first placed on the market
- PWC's
- All used boats from outside EU
- Designated components
- Inboard and outboard compression ignition and spark ignition engine emissions
- Partly completed craft and ex commercial craft

Exclusions

- DIY boats or engines (with 5-year rule)
- Craft intended for racing, and labelled as such by manufacturer
- Historic replicas, (pre 1950)
- Steam powered craft
- Canoes, kayaks, gondolas, & pedalos
- Sailing surfboards, powered surfboards
- Experimental craft
- Commercial craft
- Submersibles
- Air cushion vehicles
- Hydrofoils
- Historical replica propulsion engines (pre 1950 fitted historical or DIY craft)

32 Essential requirements covering:-

- Structure, stability, buoyancy and flotation
- Sound and exhaust emissions
- Engine, gas, electrics and fuel systems
- Fire protection, means of escape, prevention from falling overboard
- Flooding and discharge protection
- Steering, visibility, handling and anchoring
- Builders plate, technical file and owner's manual & DoC

Components 'Annex II'

Components when sold separately
subject to Notified Body involvement
and to be CE marked

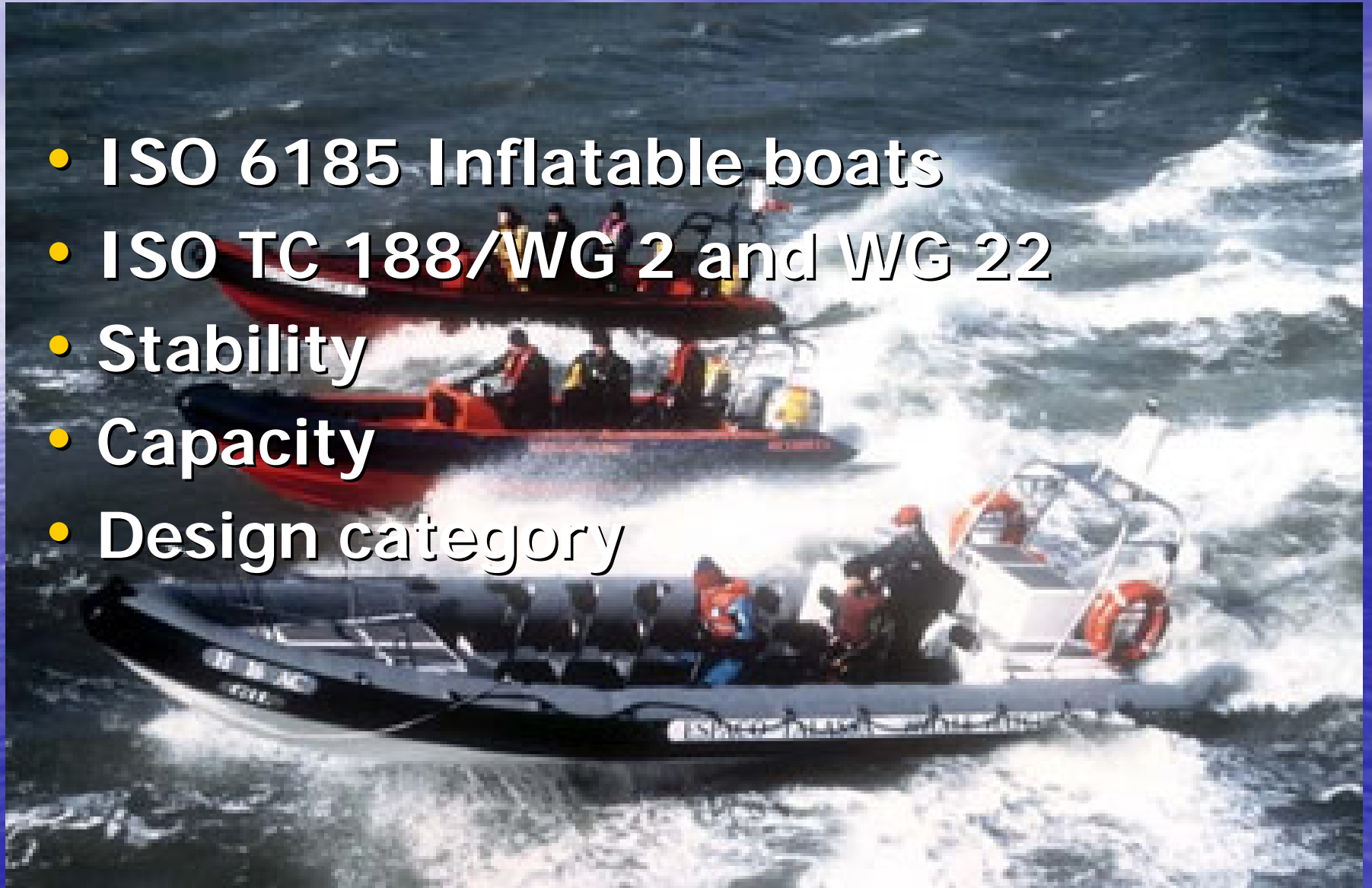
- Ignition protected equipment, start-in-gear protection equipment, steering wheels and mechanisms
- Fuel tanks and fuel hoses
- Prefabricated hatches and port lights

International Standards

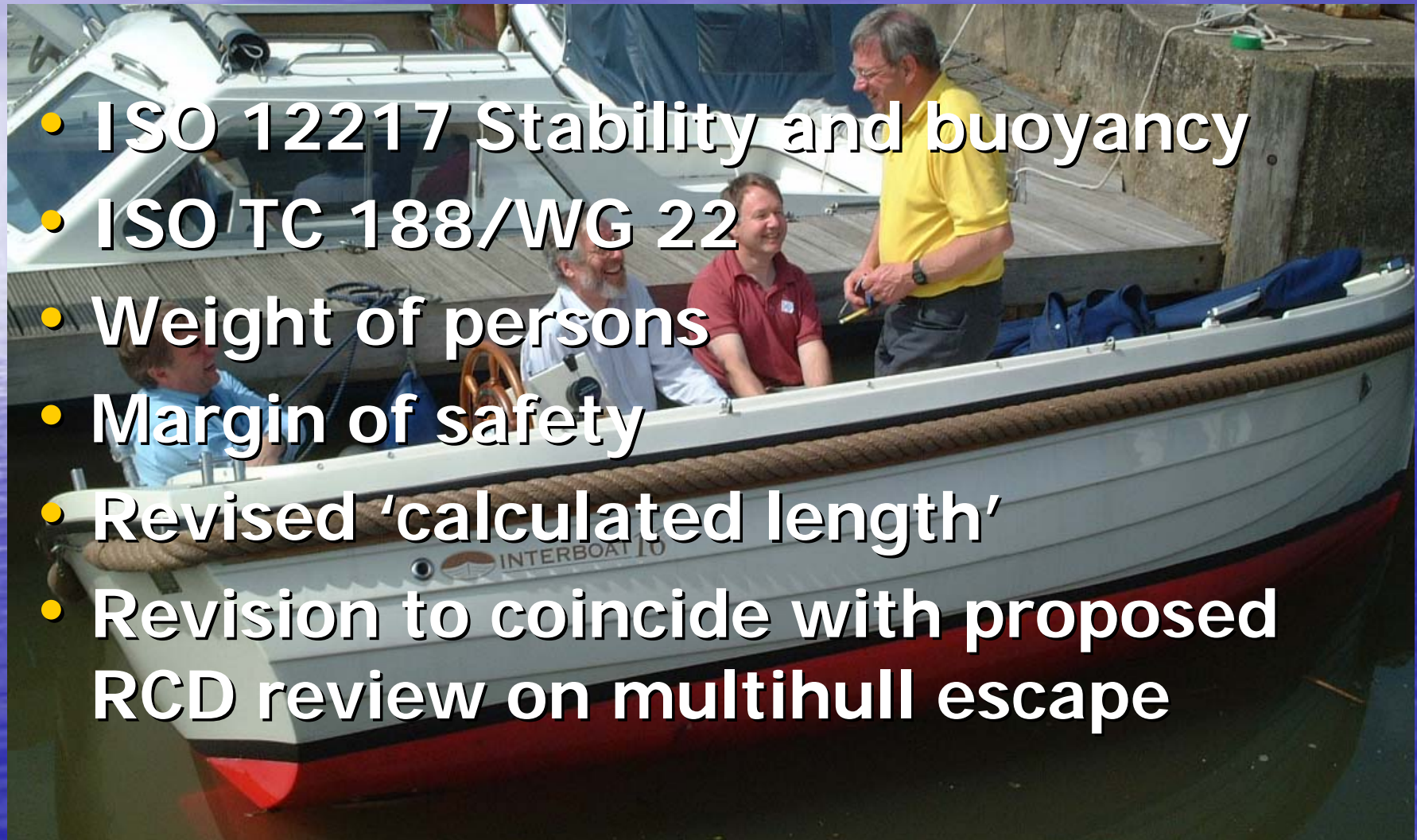
- ISO small craft standards adopted by CEN
- Mandated by EU Commission and referenced in EU Official Journal
- Provide presumption of conformity to RCD Essential Requirements
- Identified in Annex ZA
- Reflect international industry best practice

Recent Standard Developments

- ISO 6185 Inflatable boats
- ISO TC 188/WG 2 and WG 22
- Stability
- Capacity
- Design category



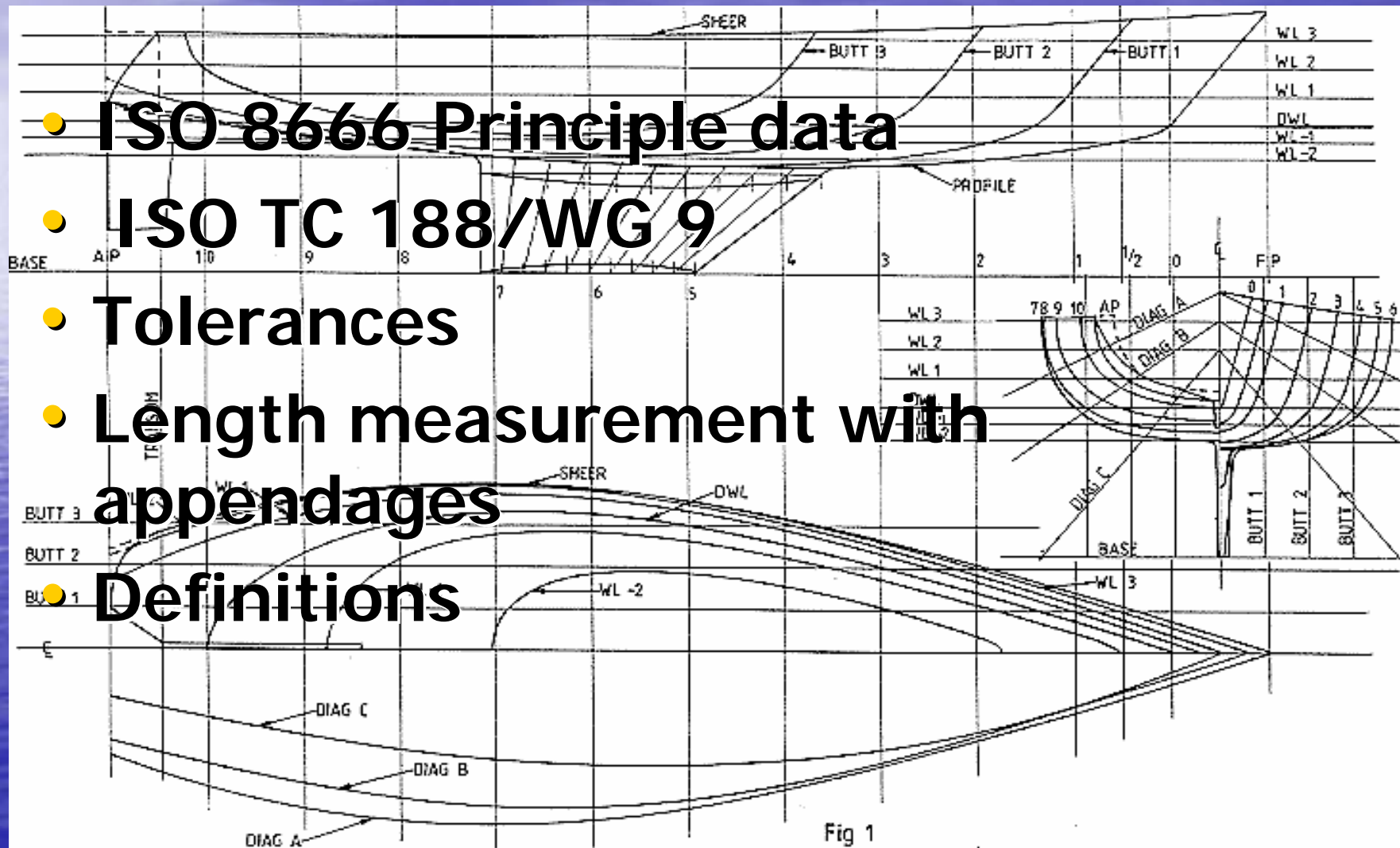
Recent Standard Developments



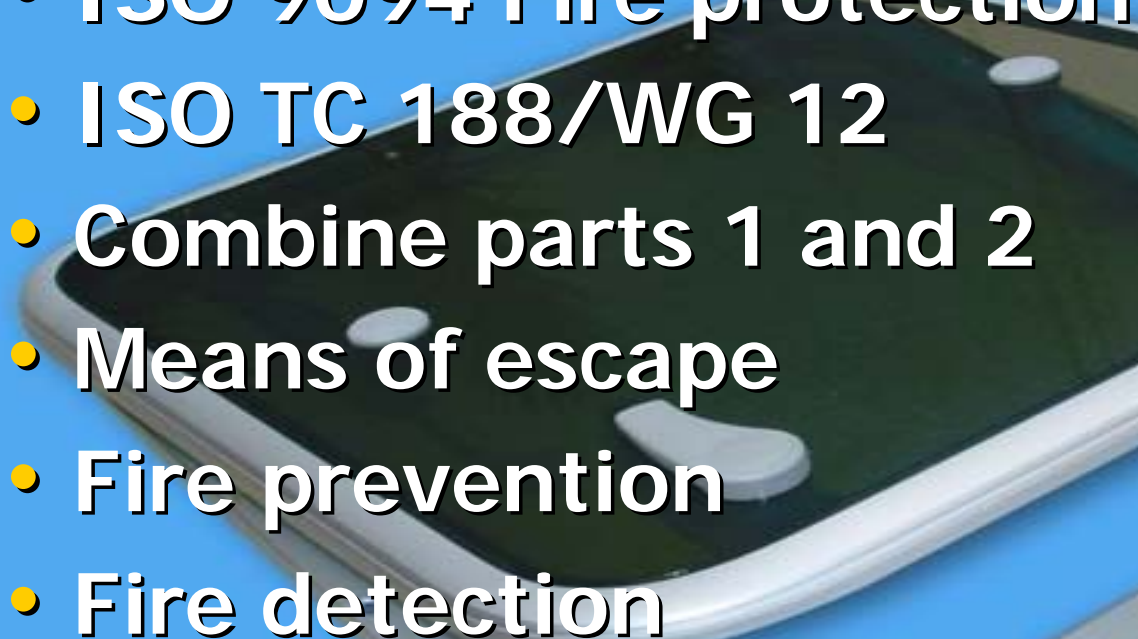
- ISO 12217 Stability and buoyancy
- ISO TC 188/WG 22
- Weight of persons
- Margin of safety
- Revised 'calculated length'
- Revision to coincide with proposed RCD review on multihull escape

Recent Standard Developments

- ISO 8666 Principle data
- ISO TC 188/WG 9
- Tolerances
- Length measurement with appendages
- Definitions



Recent Standard Developments

- ISO 9094 Fire protection
 - ISO TC 188/WG 12
 - Combine parts 1 and 2
 - Means of escape
 - Fire prevention
 - Fire detection
- 

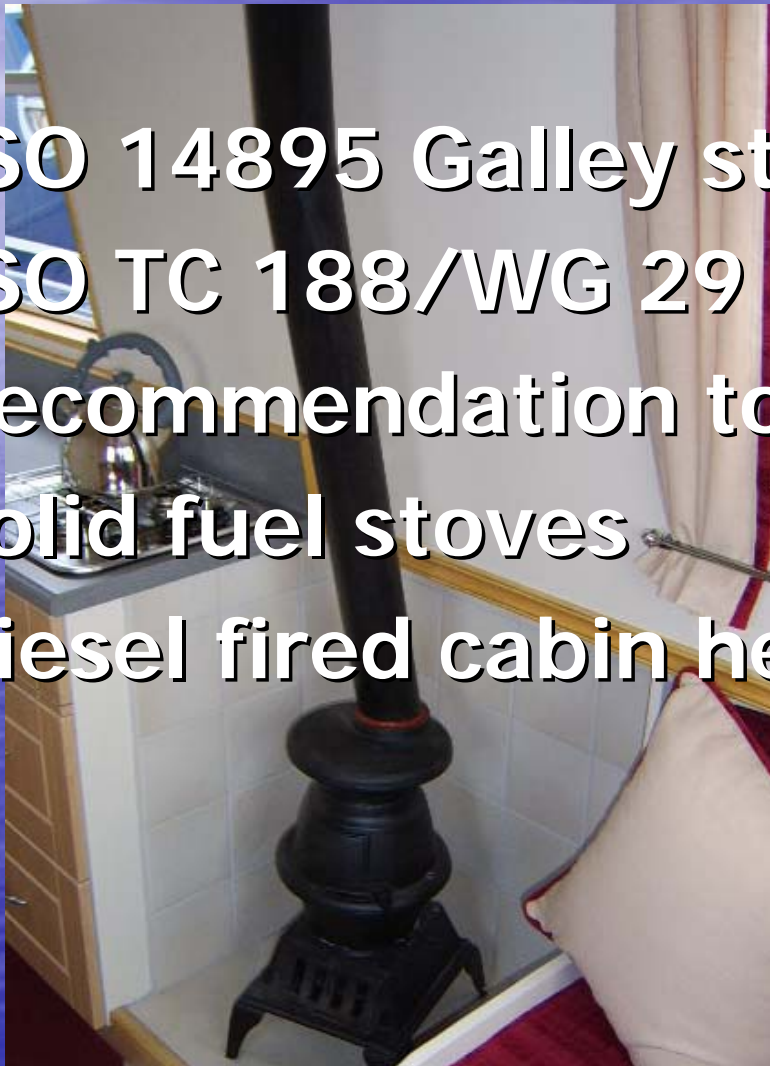
Recent Standard Developments

- ISO 12215 Scantlings
- ISO TC 188/WG 18
- 9 Parts – 7 Published
- 2 Parts - Multihull scantlings and Appendages to start again



Recent Standard Developments

- ISO 14895 Galley stoves
- ISO TC 188/WG 29
- Recommendation to include:-
- Solid fuel stoves
- Diesel fired cabin heaters



Recent Standard Developments

- ISO 15085 Man overboard prevention and Recovery
- ISO TC 188/WG 3
- Amended for single handed operation of craft



Recent Standard Developments

- ISO 16180 Navigation lights
- ISO TC 188/WG 19
- ISO standard formal objections
- EN standard 14744 proposed by CEN TC15
- CEN Technical Board BT69 to resolve



Recent Standard Developments

- ISO 13297 and 10133 Small craft electrics
- ISO TC 188/WG 10
- Potential conflict with IEC 60092-507 Small ship standard
- Resolved at meeting ISO/IEC
- ISO retain small craft standards
- Joint working group to be formed
- Hybrid Electric propulsion



Recent Standard Developments

- ISO 14509 Airborne noise assessment

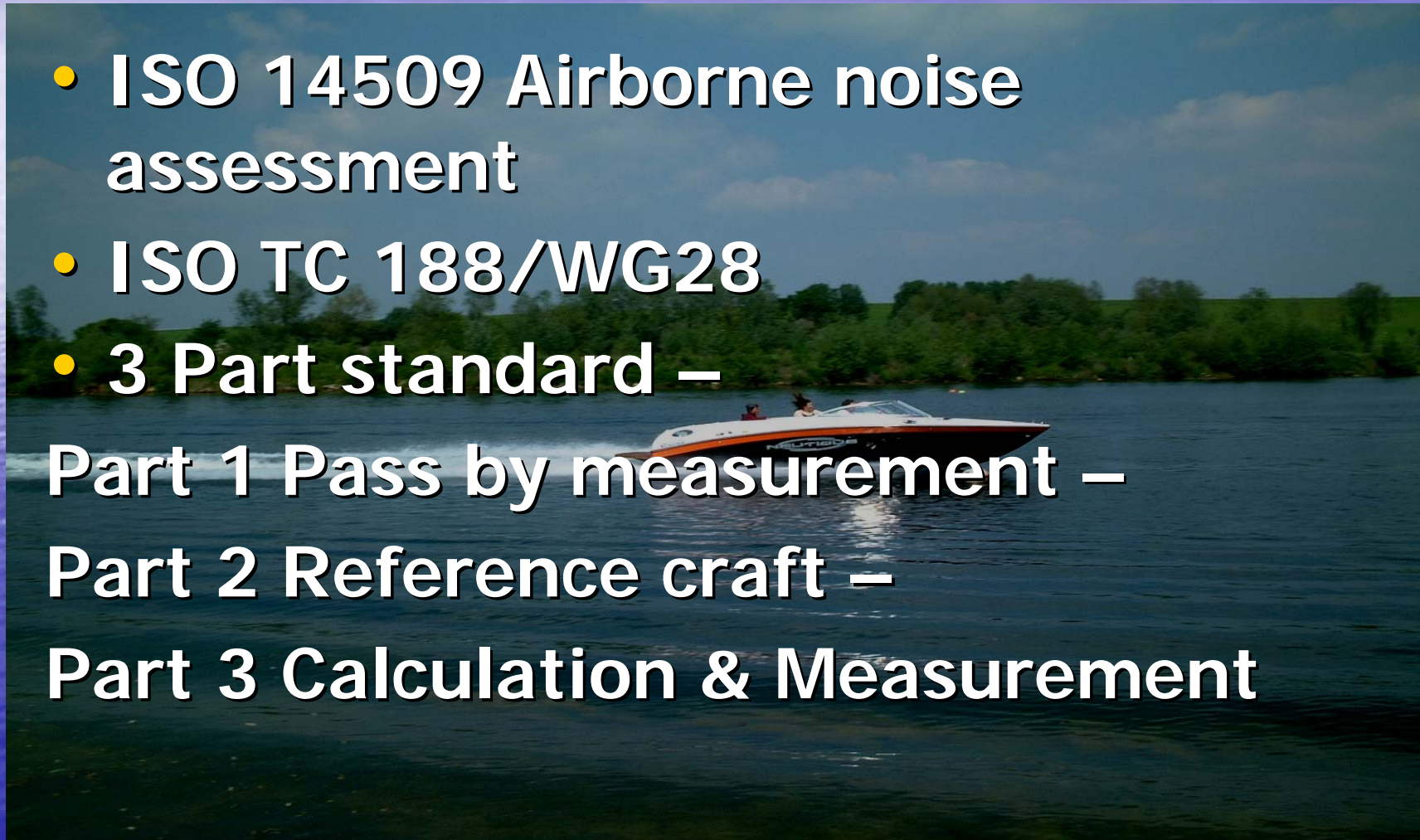
- ISO TC 188/WG28

- 3 Part standard –

Part 1 Pass by measurement –

Part 2 Reference craft –

Part 3 Calculation & Measurement



NEXT ISO WORKING GROUP MEETINGS NOVEMBER 09

- WG 18 Scantlings
- WG 22 Stability
- WG 5 Engine systems
- WG 2 Inflatables
- WG 9 Principal data



Thank you for your attention

Nigel Saw

CEN Consultant

E-mail:-

NIGEL.SAW@BTINTERNET.COM